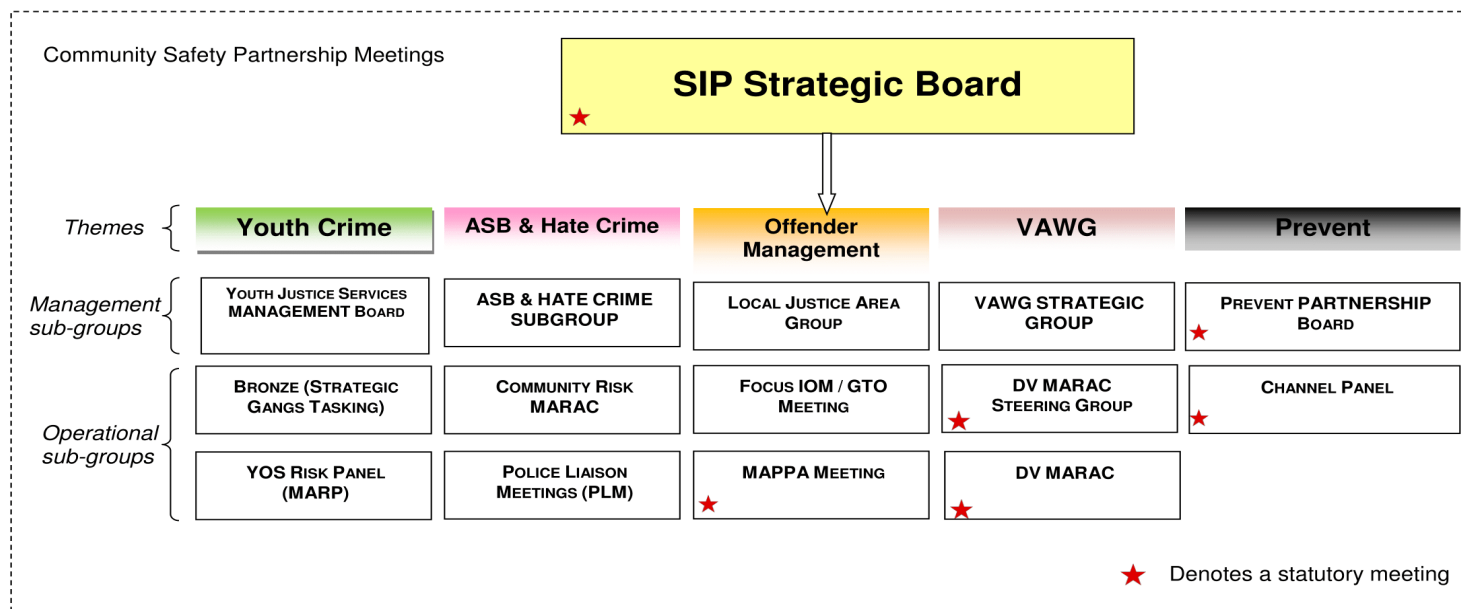


## Appendix 2: The Revised Structure of the Safer Islington Partnership (SIP)



### Community-led fora

- Safer Neighbourhood Board (SNB)
- Safer Neighbourhood Panels (SNPs)
- Hate Crime Forum (HCF)
- Stop & Search Community Monitoring Group (S&S CMG)
- Independent Advisory Group (IAG)

### Council-led fora

- Policy & Performance Scrutiny Committee (PPSC)
- Monthly Performance Panels (MPP) [crime focus biannually]
- Monthly LBI/Police Liaison Meeting (Council Leader & BCU Commander)

### Police-led fora

- North Central BCU Steering Group
- North Central BCU Project Board

### Other relevant partnership fora

- Children's Safeguarding Board (includes child sexual exploitation and missing children)
- Adults' Safeguarding Board
- Gold Groups (as initiated by MPS, LBI or LFB in response to critical incidents)
- LFB Liaison Group
- Hoarding Panel
- Suicide Prevention Panel
- Borough Resilience Forum